



  
**Aravilla**  
Clearwater Memory Care

# Better Living by Design

Aravilla was engineered from the ground up with your loved one's safety, comfort, and convenience in mind. From the spacious architecture and resort-like atmosphere, right down to the detailed and high-end finishes, our community is truly unique.

When you visit our campus, you'll see the marriage of evidence-based science and pleasing aesthetics that served as the inspiration for our design. A "yellow brick road" makes flow and wayfinding both easy and intuitive, while inviting, neighborhood-style front porches line every hallway. What's more, every spacious and tastefully-appointed residence includes intelligent features that maximize safety, independence and quality of life.

## Creating an Appetite for Delight

In keeping with our philosophy that every resident of Aravilla should enjoy optimal health and happiness, we put exceptional effort into our dining service. As a result, we've set a new standard for dining in memory care. Your loved one will not just enjoy meals, but will fully experience a dining atmosphere three times a day in a restaurant setting with beautiful linens, fine table settings and friendly service.

A feast for the eyes and body, meals are planned and prepared by our professional chefs, using delicious and fresh ingredients including plenty of straight-from-the-vine vegetables and fruits. Menus include an abundance of tasty dishes inspired by the Mediterranean diet,

known as the healthiest diet in the world, with minimal sodium to optimize heart and brain function. Plenty of traditional staples and down-home comfort favorites are also available, and our chefs are always standing by to accommodate special requests and dietary requirements.



# A Friend from Day One

We believe that compassion is both a promise and a way of life. That is why each new memory care resident at Aravilla is paired with a personal Welcome Concierge on the day of their arrival. This specialty-trained staff member serves as a constant companion for three eight-hour days and helps make transitioning a breeze.

Our goal in assigning a personal Welcome Concierge is to spend time listening to your loved one so we can gain a deep understanding of who they are as a person, and identify their specific needs. This helps us create a highly customized plan of care that takes into account all the things that make your loved one special - personality, likes and dislikes, habits, routines and distinct needs.

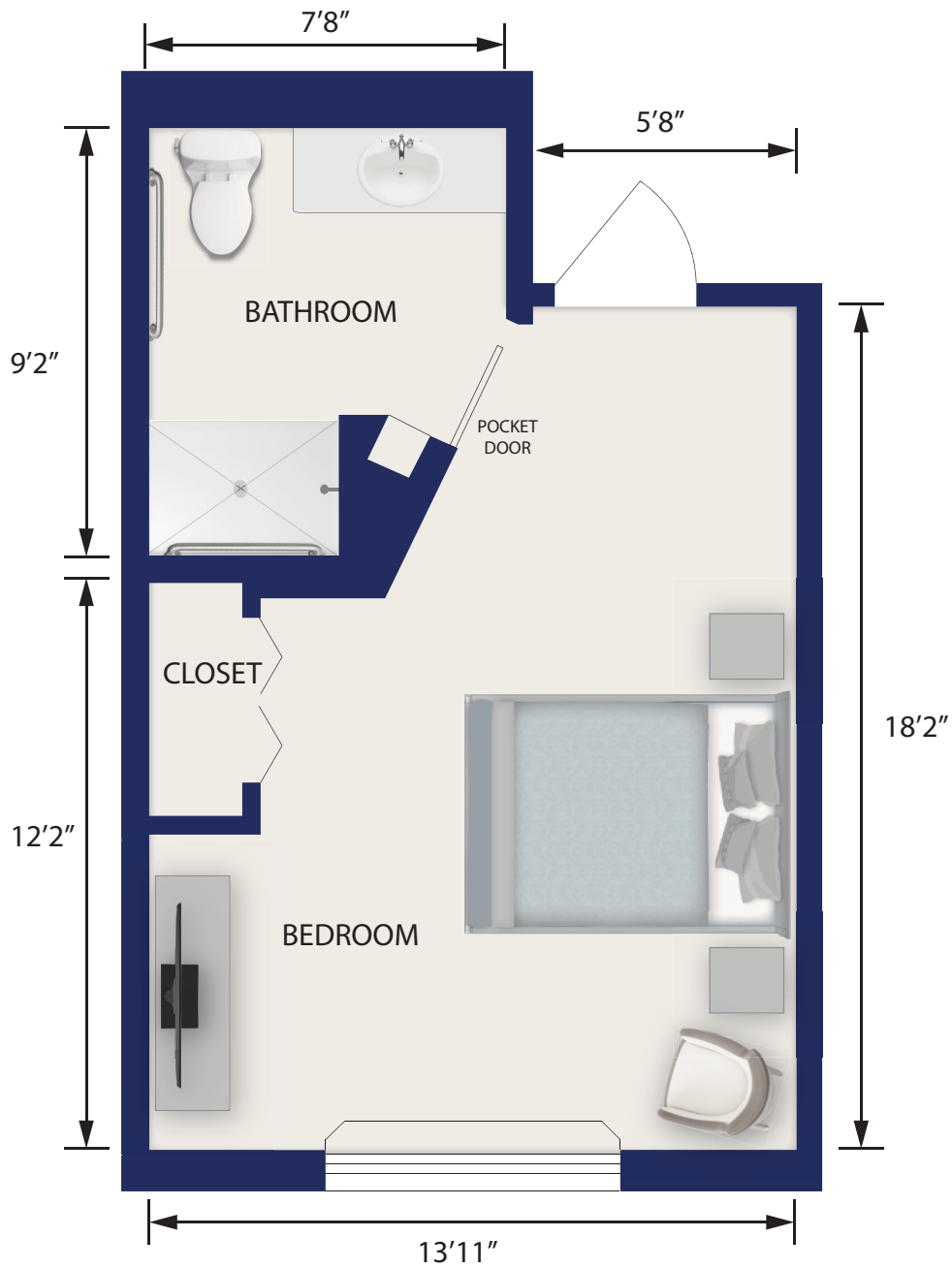
Another important benefit of our one-on-one Welcome Concierge is your loved one will be introduced and oriented to our community in the way that helps create comfort and familiarity. Having a special friend and escort right by your loved one's side means they will never have to wonder where to go or whom to ask for help.

## A Family of Nurturing Caregivers

We understand that the physical and emotional toll of dementia can be heavy, and that symptoms are unique to each person. However, you can take comfort in knowing that the same friendly and highly-skilled caregivers will patiently nurture, protect, and engage with your loved one each day. They'll get to know one another, make meaning personal connections, and build a relationship that ensures consistency of care, comfort, and dignity.

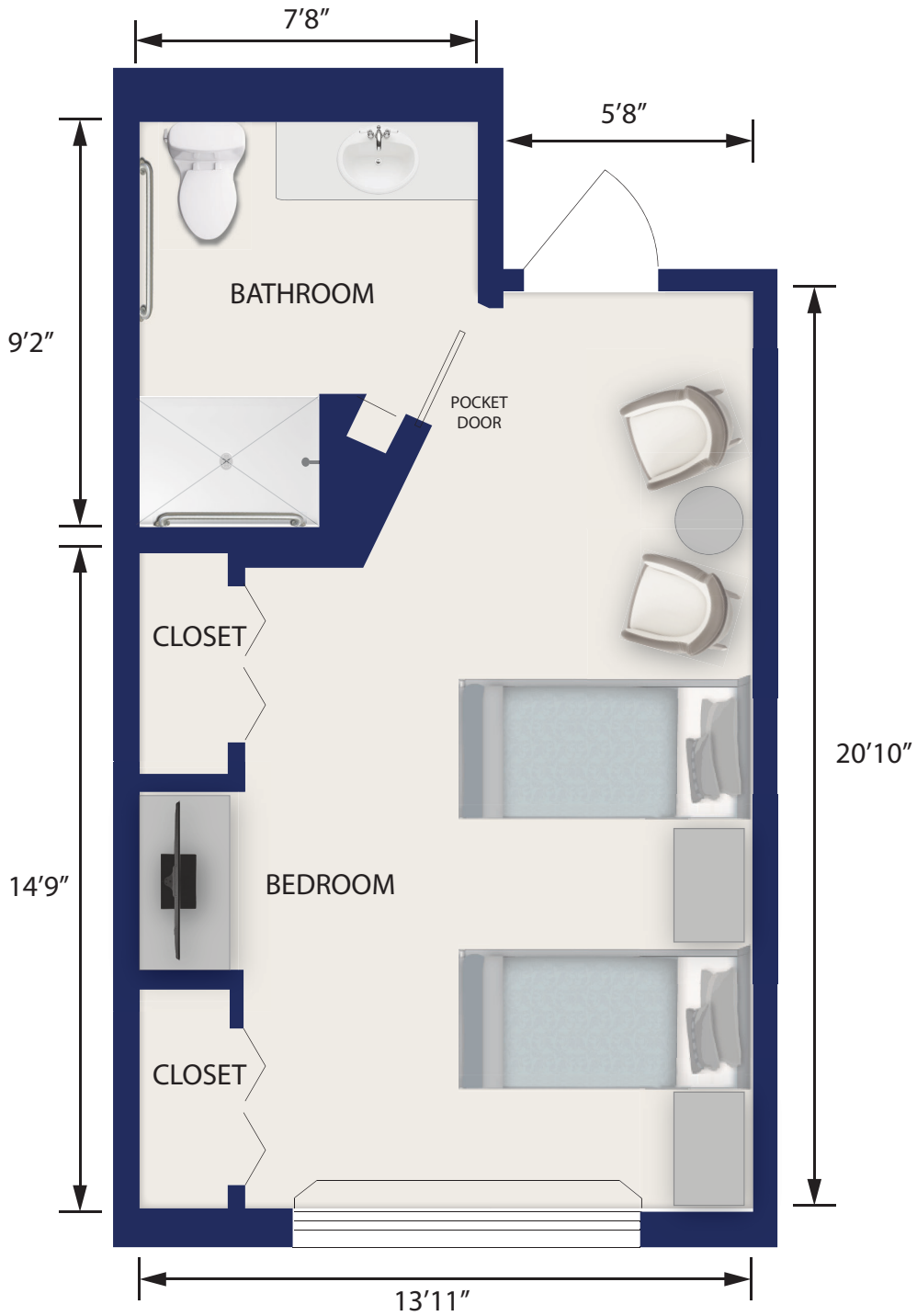
If ever your loved one's care requirements should change, so too will the care we provide. In addition to a 24-hour care staff, we will arrange customized, individual therapies such as physical, speech and occupational therapy. At Aravilla, your loved one will have all the tools and resources needed to ensure a healthier mind and body.





## Sand Dollar

283 SQ FT



**Starfish**  
320 SQ FT



# Aravilla

Clearwater Memory Care



## Coral Suite

354 SQ FT



## What sets us apart

- 🦢 Exceptional, qualified, caregivers
- 🦢 Staff training exceeding the requirements from the state of Florida
- 🦢 Professional Dementia care trainers
- 🦢 Executive Director with years of experience in elder care
- 🦢 Robust activities and off-site excursions



3055 Union St | Clearwater, FL 33759 | 727.260.2826 | [info@aravillaclearwater.com](mailto:info@aravillaclearwater.com)  
[AravillaClearwater.com](http://AravillaClearwater.com)